

1/350 Scale TOS NCC-1701  
Enterprise



# 1/350 scale TOS Enterprise Masking Kit Installation Guide



## 1/350 Scale TOS NCC-1701 Enterprise



Congratulations! You're about to begin a mission to elevate your model to the next level—going boldly where no mask kit has gone before. Say goodbye to silvering, bubbles, and cracking, and achieve a true hand-painted finish. Before you begin, take time to carefully review the mask sheets and instructions. This kit was designed with first-time users in mind, but patience is key. During the weeding process—removing unwanted vinyl from the sheet—be mindful not to accidentally lift pieces you intend to keep.

Some steps in this kit involve layering masks over previously applied ones. To make alignment easier, a semi-transparent masking material is included, allowing you to see both layers clearly. Positioning notches are also built into the masks to help with precise centering.

The most critical—and time-consuming—step is preparing the base paint. A smooth, fully cured surface is essential for success and will help prevent paint from lifting when masks are removed. Always test your paint and masking technique on a spare surface first (test, test, and test again) to build confidence before working on your model.

Although this kit uses a premium, low-tack vinyl designed to leave no residue, careful removal is still important. Take your time and peel masks away slowly to avoid lifting the base paint. With patience and attention to detail, the final result will be well worth the effort.

If you have any questions or comments, do not hesitate to contact us at [Tinman@warppaintmask.com](mailto:Tinman@warppaintmask.com)



## 1/350 Scale TOS NCC-1701 Enterprise



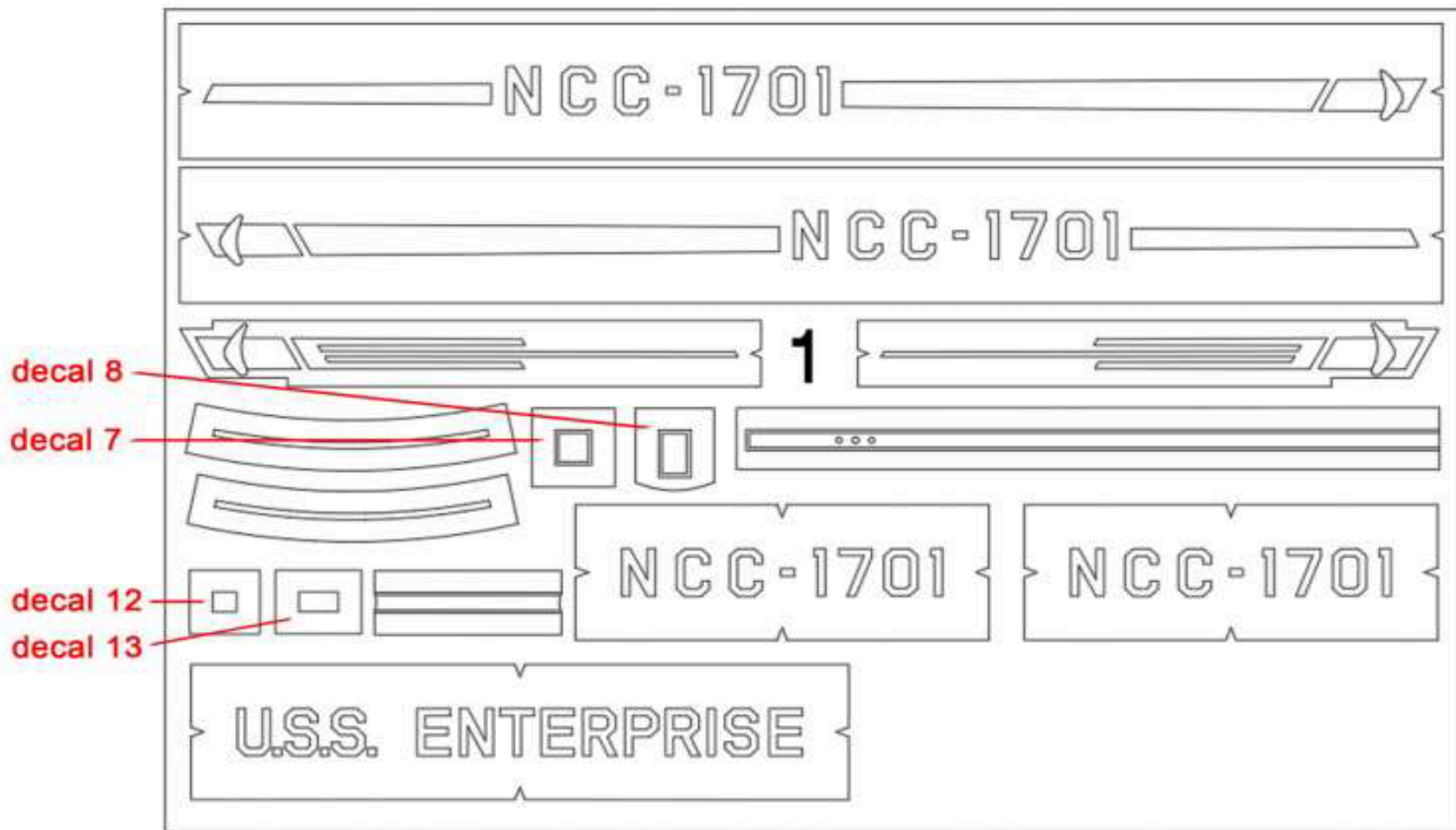
As with all vinyl masking products, adhesion increases the longer the vinyl remains in place. After 24 hours, extra care is required during removal to avoid lifting the base paint from your model. As a best practice, only mask areas you can complete within a single day.

### This Kit includes

- 3 - masking sheets
- 3 – transfer sheets
- instruction guide



# Sheet 1 Layout



decal 8

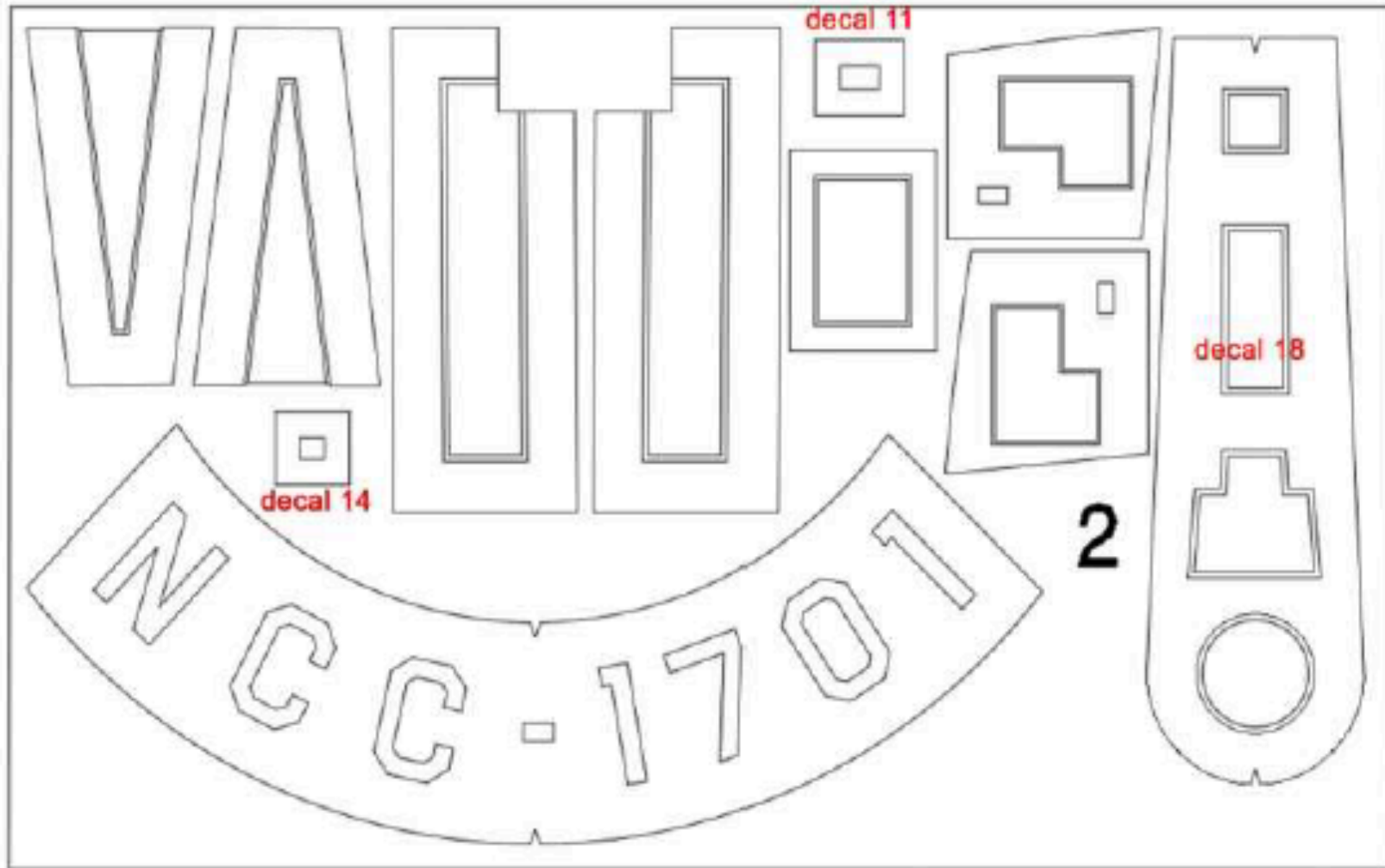
decal 7

decal 12

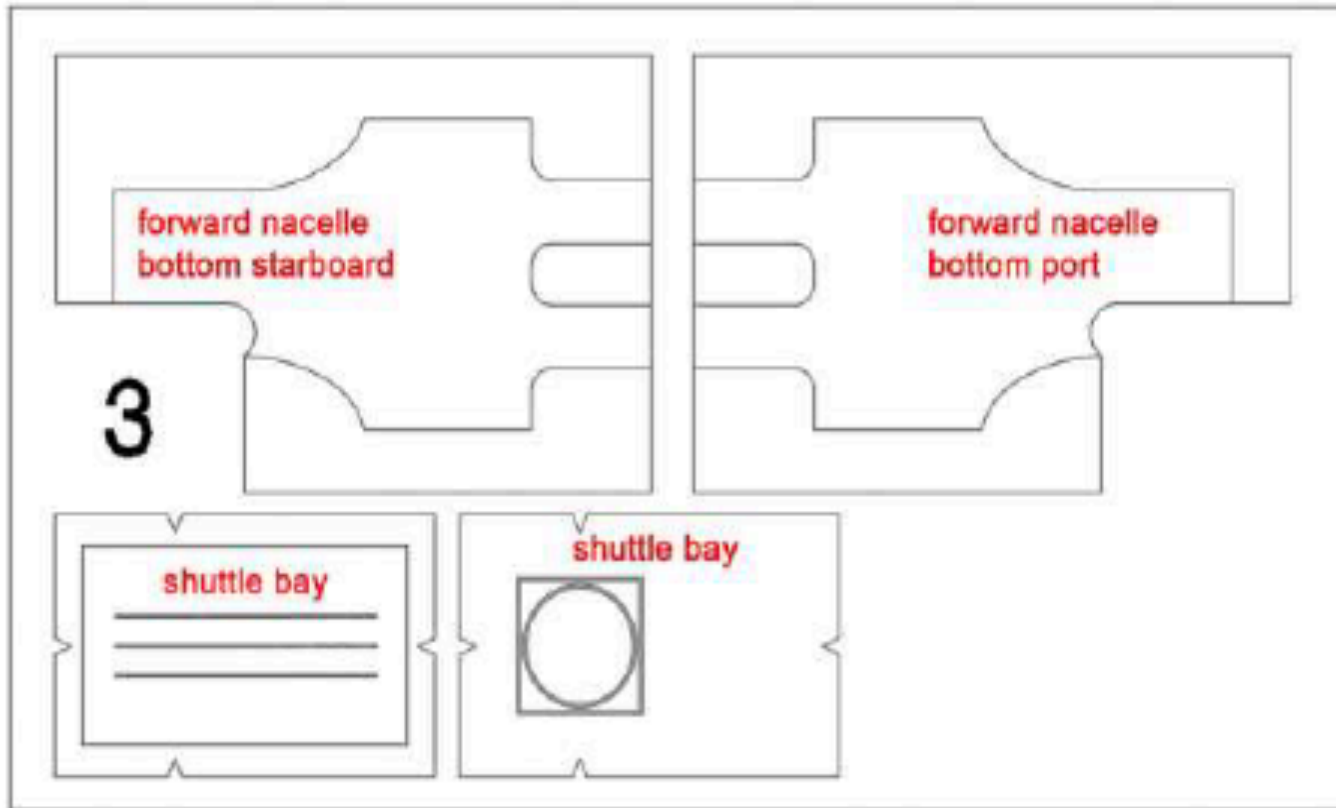
decal 13



# Sheet 2 Layout



# Sheet 3 Layout



# Nacelles Lettering Layout



Masking template – notches on the ends are for center line alignment

Step 1 – only weck the ‘NCC – 1701’ leave all the rest of the masking in place, apply to masking to model. Paint BLACK on the NCC-1701

Step 2 – cover NCC – 1701 with masking tape. Remove masking as shown and keep on transfer sheet for next step. Paint YELLOW.

Step 3 – place kept mask back over YELLOW area. Remove masking as shown. Paint RED. When finished painting red remove all masking.



# Secondary Hull Badging



Masking template – notches on the ends are for center line alignment



Step 1 – Remove only masking as shown. Keep on transfer for next step. Paint YELLOW.



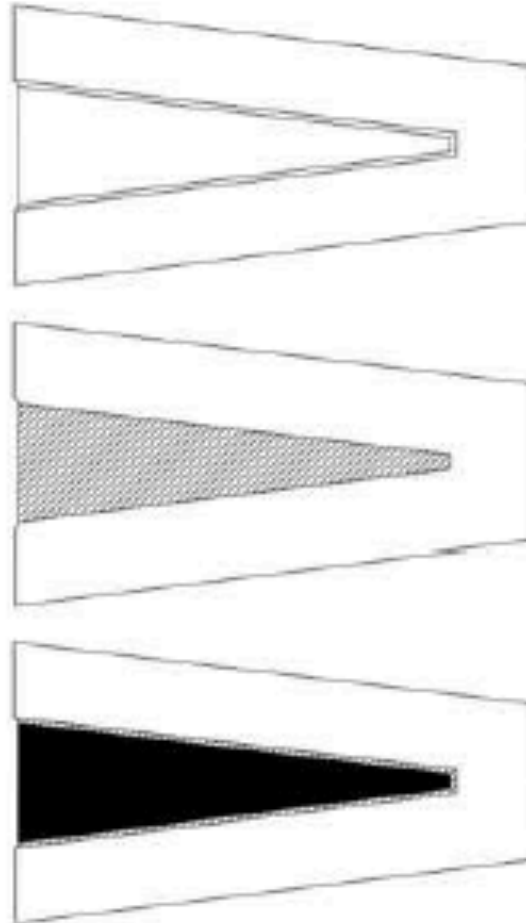
Step 2 – Place kept mask back over YELLOW area. Remove masking as shown. Paint RED. When finished painting red remove all masking



# Paint Decal #1 & #5



Masking template



Step 1 – Remove masking as shown and keep on transfer sheet for next step. Airbrush GREY fade

Step 2 – Replace kept masking and remove masking as shown Paint GREY

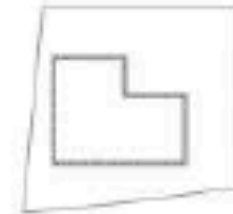
Masking template



Step 1 – Remove masking as shown. Paint YELLOW>



Step 2 – Cover YELLOW area with masking tape and remove masking as shown. Paint GREY.



### Alignment tip:

You can remove the large polygon center piece mask before applying the clear transfer and apply it directly to the saucer then apply the reaming mask over it. The transparent blue mask will help make it easier to line up.

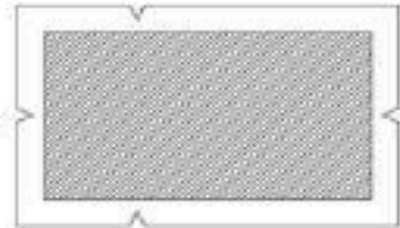


# Paint Decal

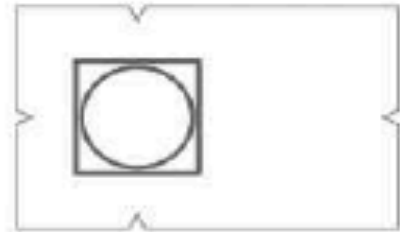
Step 1 - Remove lines and apply masking using notches as centering guidelines. Paint GREY.



Step 2 - Remove center area and leave outside area for next step alignment.



Step 3 - Install masking over first one. Use notches to align. Remove square and paint RED. Cover RED square with masking tape and remove circle. Paint YELLOW



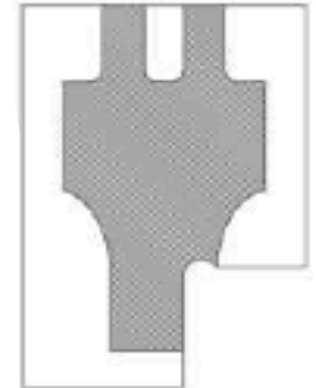
Decal 7 - Apply entire mask and remove hatched area and keep for next step. Paint YELLOW.



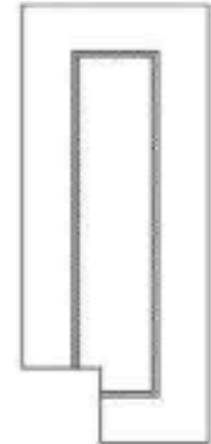
Re-apply mask over YELLOW and remove hatched area Paint RED



Decal 22 and 23 - Apply entire mask and remove hatched area. Paint GREY.



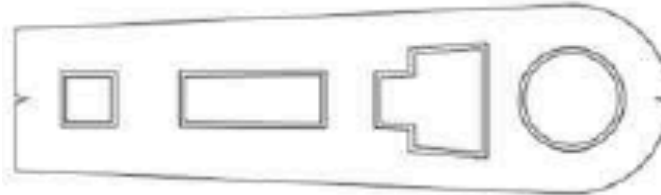
Decal 24 and 25 - Apply entire mask and remove hatched area. Paint RED.



# Paint Decal 18



Masking template



Step 1 – Remove masking as shown and keep for next step. Paint YELLOW.



Step 2 – Re-apply mask over YELLOW area and remove hatched areas Paint RED.



Step 3 – Apply masking tape over RED area. Remove hatched area and keep for next step. Paint LT. GREY.



Step 4 – Re-apply masking over LT. GREY area. Remove hatched areas. Paint GREY.

